

Floodplain Management Association 2011



**DWR's Framework for Investments in Delta
Integrated Flood Management**
David Mraz

What is the Delta?

A network of levees and channels that work together as a system

- Legally Defined
- 738,000 Acres
- Important to State and National Interests
- Approximately 70 Islands
- Significant Infrastructure
- 1,115 Miles of Levee

State Interest in Integrated Flood Management in the Delta

- Provide Appropriate Flood Protection
- Protect State Economy
 - water supply for California
 - Transportation
- Protect the Delta Ecosystem
 - An Ecosystem of National Importance
- Preserving the Delta as a place

Opportunities to support Integrated Flood Management in the Delta

- Maintenance
- Facility Improvement
- New Structural Solutions
- New Non-structural Solutions
- Habitat Enhancement
- Emergency Preparedness, Response and Recovery
- Subsidence Reversal
- Studies, Planning and Evaluations

DWR Approach

Projects With Multiple Benefits



Preserve Future Opportunities



Consider Economics & Ecosystem



Publish Priorities



Secure Funding Partners



Coordinate

Investment Targets

Urban Areas

Small Communities

Critical Infrastructure

Agriculture

Ecosystem Restoration



DWR Cost Sharing

Federally Authorized Projects



50%-70% of Non-Federal Costs



State Financial Participation Increases with Multi-purpose Projects

DWR Cost Sharing

Local Subvention Projects

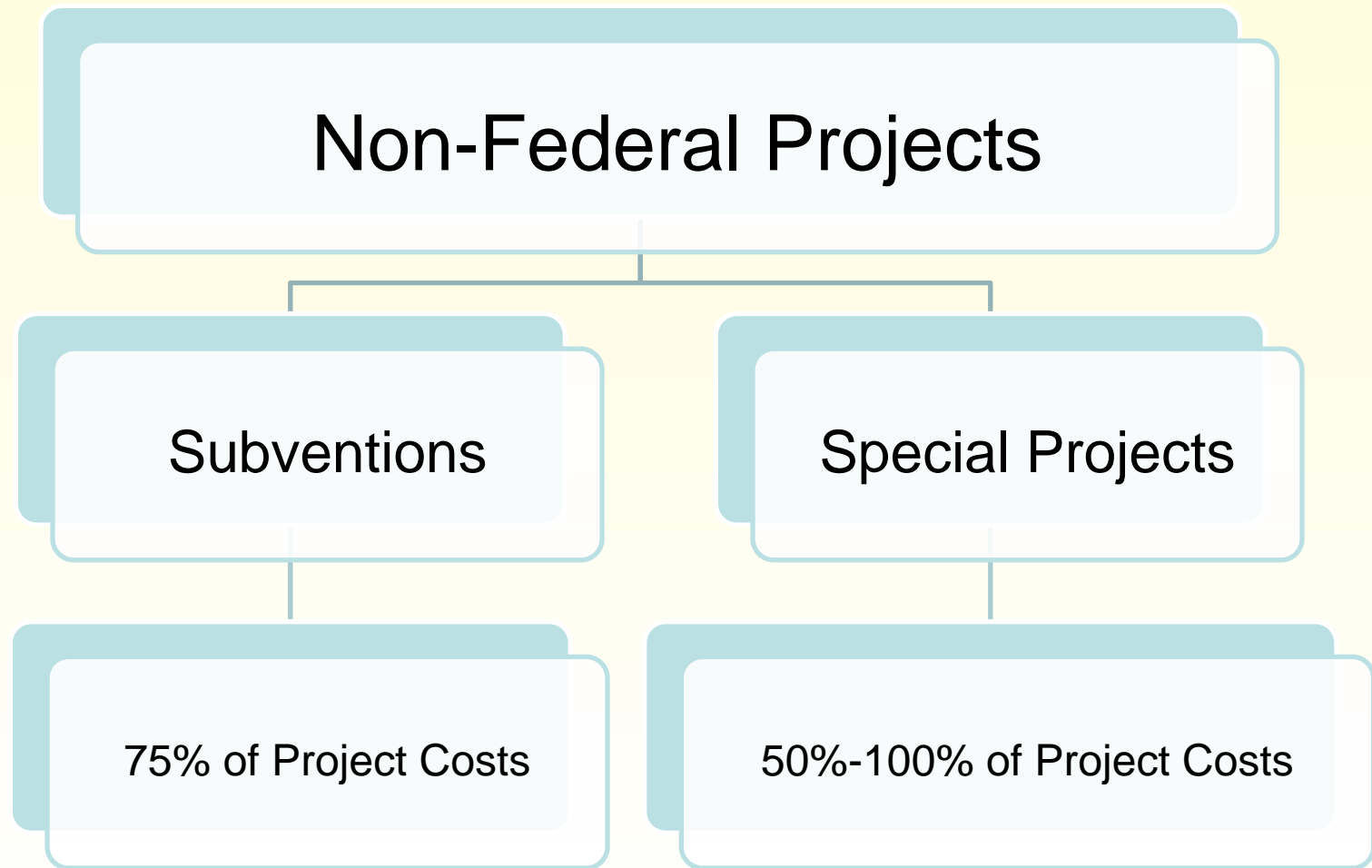


75% of Project Costs



State Provides Additional Funding to Protect Statewide Interests

DWR Cost Sharing Continued



Determining the Value of DWR Investments



Single Actions - Multiple Benefits

Delta Levees

- Contain flood flows
- Water Supply
- Habitat

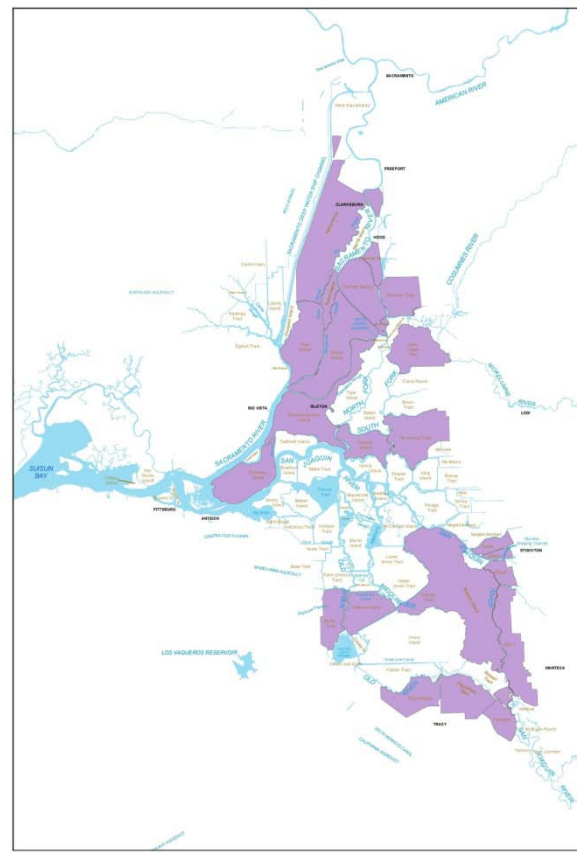


Guiding Principles for DWR Investment in Delta Integrated Flood Management

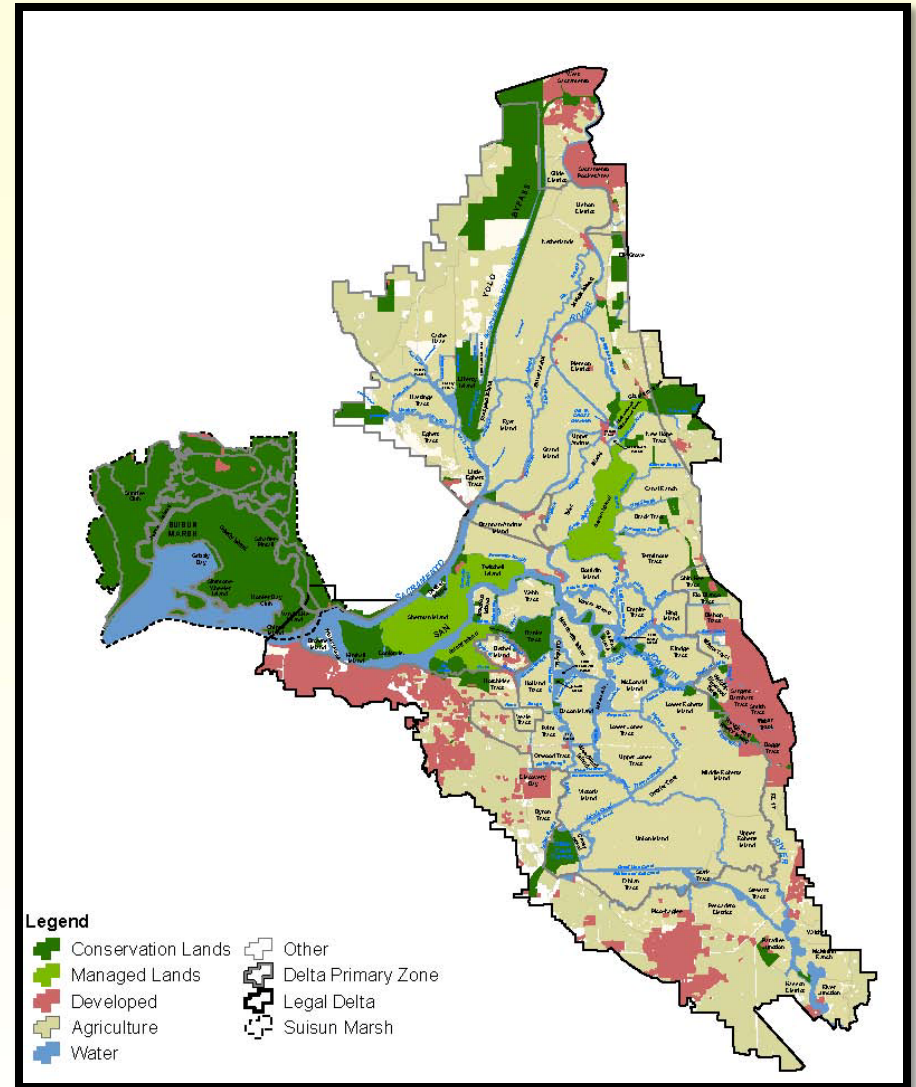
- Encourage projects that provide benefits for multiple areas of State interest (when possible projects that address 3 or more)
- Give preference to projects that preserve opportunities for priority actions identified in other large scale planning efforts, (i.e. BDCP, CVFPP, and the Delta Plan)

Priority for DWR Investment in Delta Integrated Flood Management	Categories of Benefit Analysis		
	Localized Flood Protection	Levee Network	Ecosystem Conservation
First	Protect Urban Areas	Protect Water Quality and Water Supply Conveyance in the Delta	Protect Existing and Provide for Net Increase in Channel-margin Habitat
Second	Protect Small Communities and Critical Infrastructure (Located Outside of Urban Areas)	Protect Flood Water Conveyance in and through the Delta	Protect Existing and Provide for Net Enhancement of floodplain habitat
Third	Protect Agriculture and Local Working Landscapes	Protect Cultural, Historic, Aesthetic, and Recreational Resources (Delta as Place)	Protect Existing and Provide for Net Enhancement of Wetlands

Major Roads – Delta Islands and Tracts

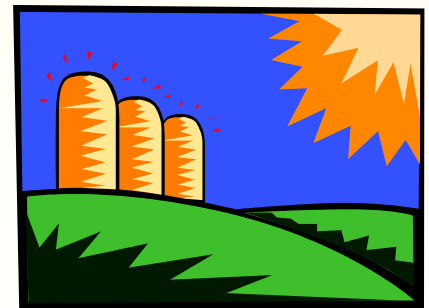
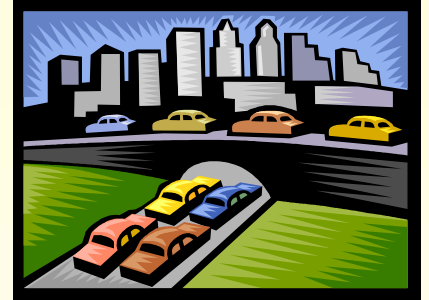


Delta Land including Conservation and Managed Lands



Localized Flood Protection

- Urban Areas
- Small Communities
- Agriculture



Levee Network

- Water Quality and Water Supply
- Flood Capacity and Conveyance
- Preserving the Delta as a Place



Ecosystem Conservation

- Channel-margin Habitat
- Floodplain Habitat
- Wetlands



Conclusions

